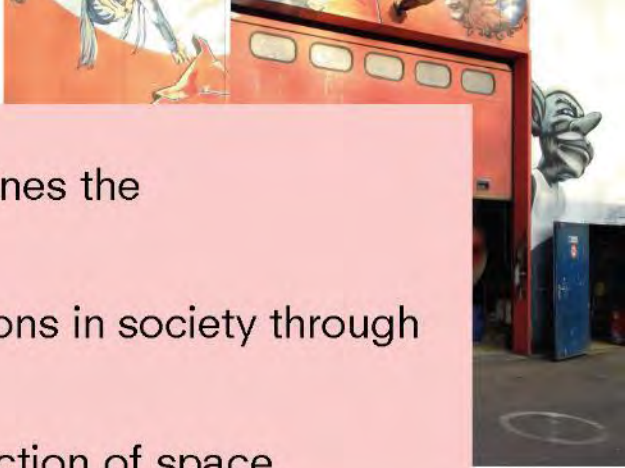


A world map with a grid overlay. The map shows the outlines of continents and a grid of latitude and longitude lines. The text "51N4E" is prominently displayed in the center of the map, over the Atlantic Ocean. The grid lines are solid, while the latitude lines at 51N and 4E are dashed. The text "51N4E" is in a large, bold, black font.

51N4E



51N4E imagines the transformations in society through the coproduction of space



URBAN RENEWAL



Kruitfabriek, PSR/MATEXI, Vilvoorde, BE



Budafabriek, Stad Kortrijk, Kortrijk, BE



MUHKA, Vlaams Bouwmeester/CABA, Antwerpen, BE



Regatta, Vooruitzicht/Probis Corporate, Antwerpen, BE



Parkeergebouw, Stad Genk



Lana Bridge, Stad Tirana, Tirana, AL



C-Mine, Stad Genk, Genk, BE



Lamot, Stad Mechelen, Mechelen, BE

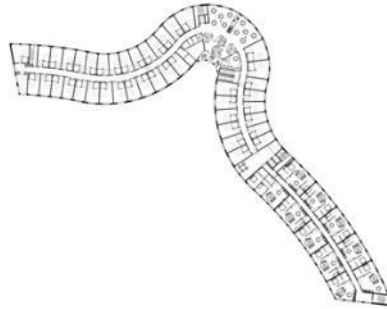


Grootkapel, QUALI, Alsemberg, BE

LIVING APART TOGETHER



OCMW Nevele, OCMW Nevele, Nevele, BE



Grootkapel, QUALI, Alseberg, BE



Huis aan't Laar, Vzw Monnikenheide, Zoersel, BE



Regatta, Vooruitzicht/Probis Corporate, Antwerpen, BE



Résidence Palaiseau, RSF, Palaiseau, FR



Bpost, AG Real Estate/Vooruitzicht, Brussel, BE



De Lork, De Lork VZW, Brussel, BE



Falconpoort, AG Vespa, Antwerpen, BE

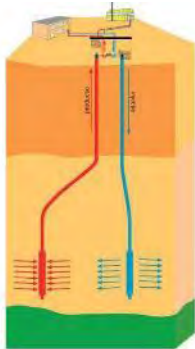


Peterbos, Anderlecht, BE

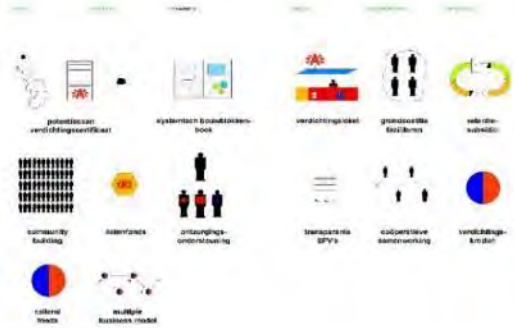
TERRITORIES AND GOVERNANCE



Over de Ring, Stad Antwerpen, BE



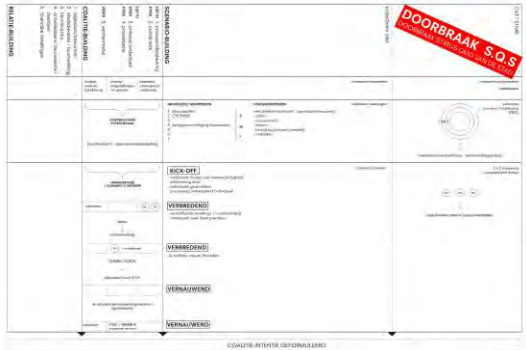
Diepe Geothermie, Vlaams Bouwmeester, Vlaams, BE



Labo XX, Stad Antwerpen, Antwerpen, BE



Labo XX, Stad Antwerpen, Antwerpen, BE



Lage Weg, Stad Antwerpen, Antwerpen, BE



Lage Weg, Stad Antwerpen, Antwerpen, BE



Flyover, Gen, BE



50.000 Logements, CUB, Bordeaux, FR

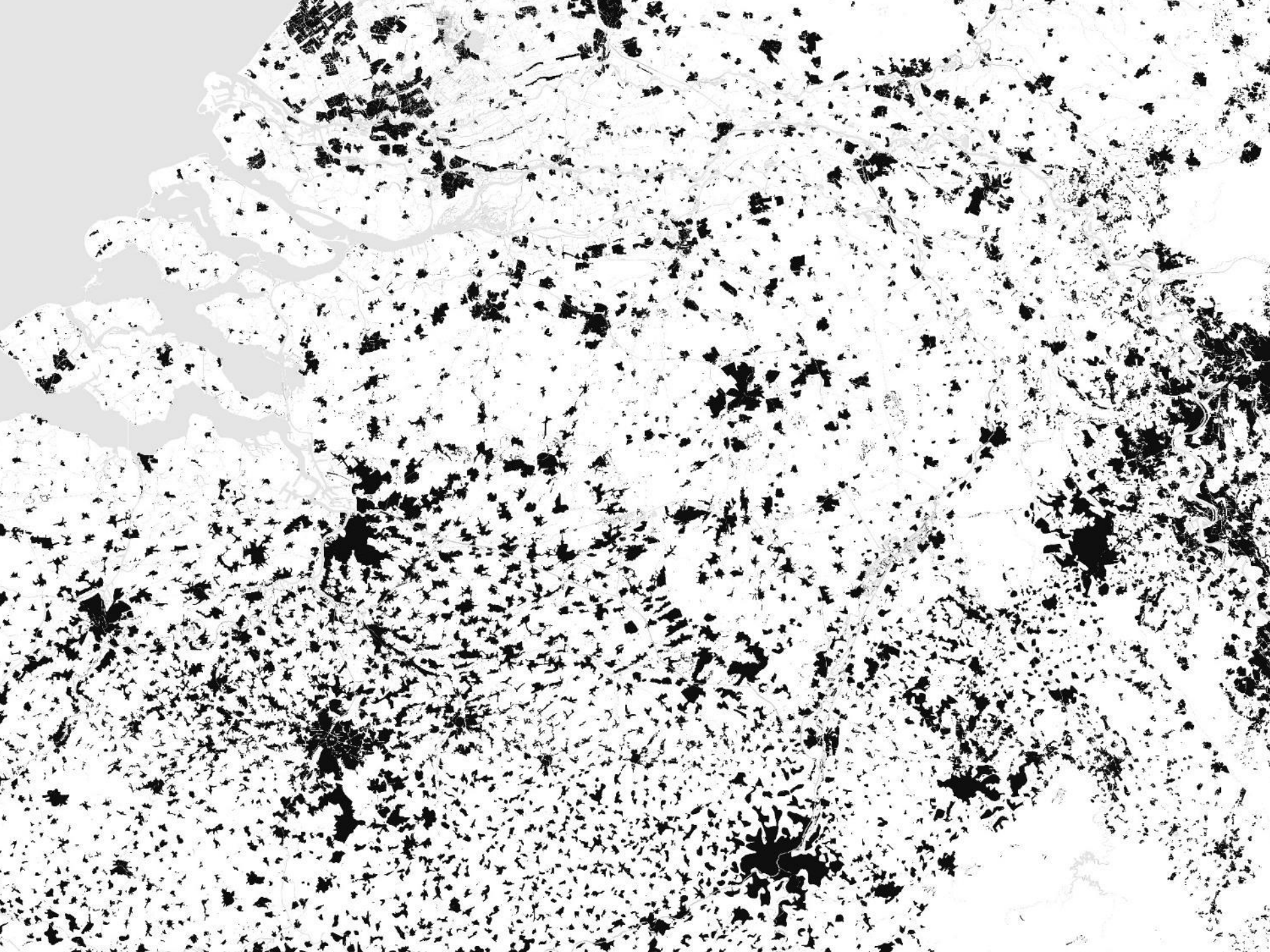


OIN Alzette-Belval, EPA Alzette-Belval, Lorraine, FR

THE CONTEXT
THE PROCESS
THE ALLIANCE
THE TRANSFORMATION

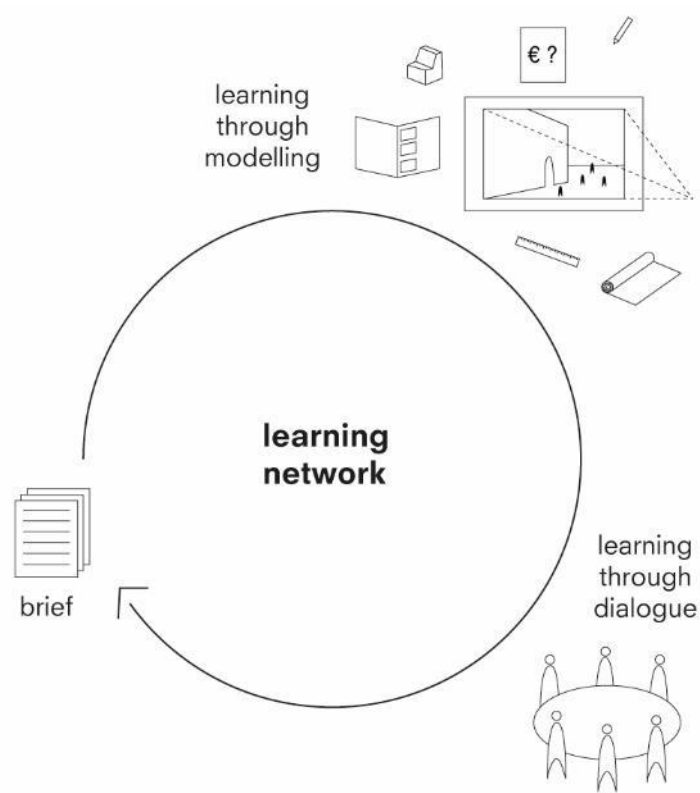


TOWARDS A
CIRCULAR BUILT
ENVIRONMENT
(THE CONTEXT)





TOWARDS
COLLECTIVE
LEARNING
ENVIRONMENT
(THE PROCESS)



Collaboration

Long term trust relationship

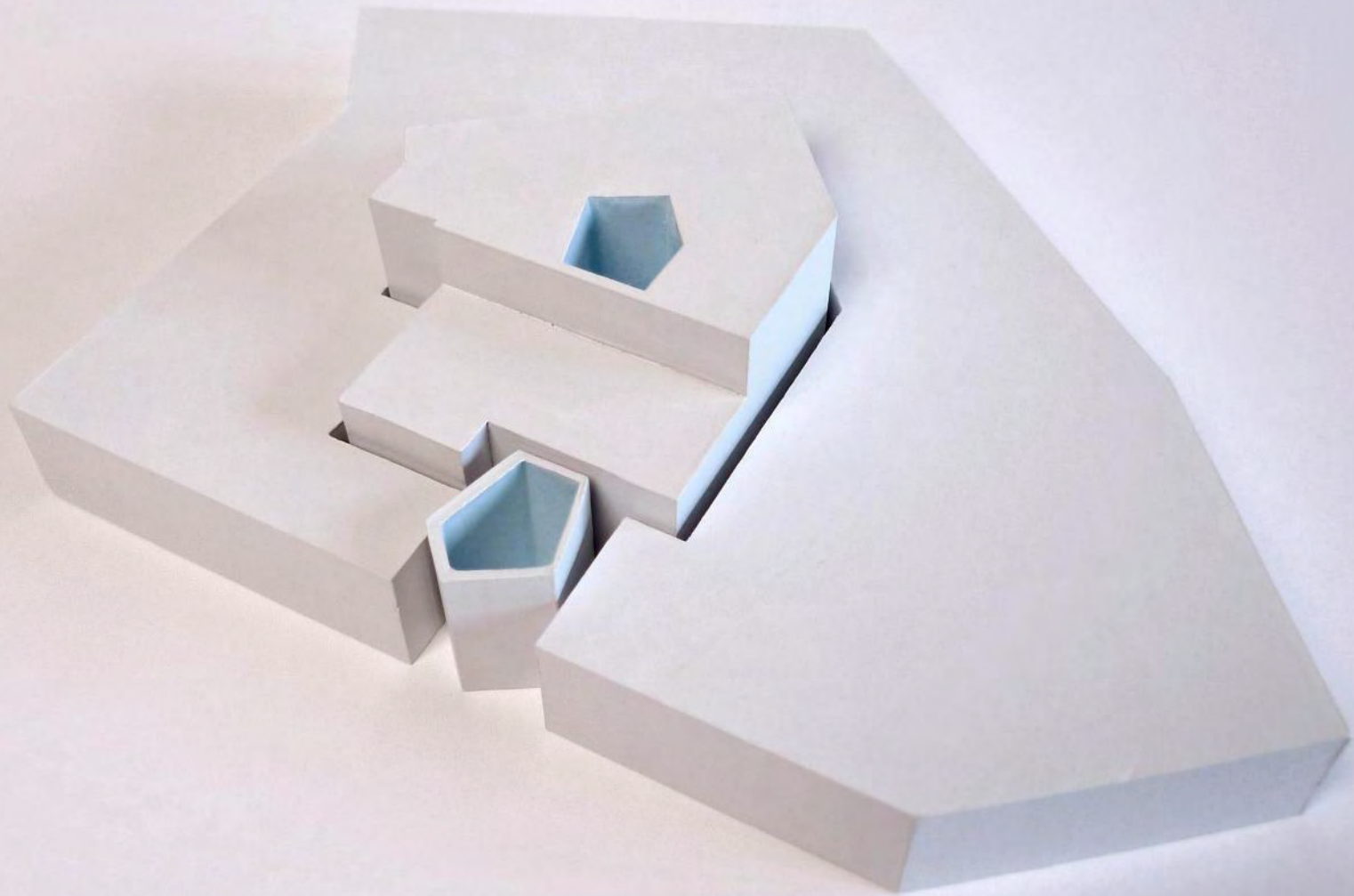
Share incentivisation

Transparency

Innovation → new products

BUDA FACTORY





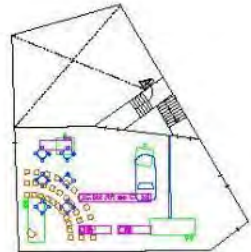
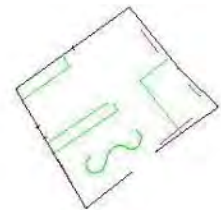
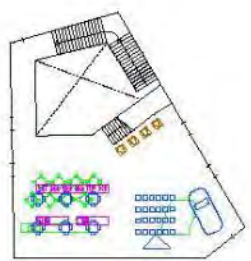
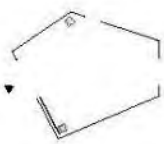
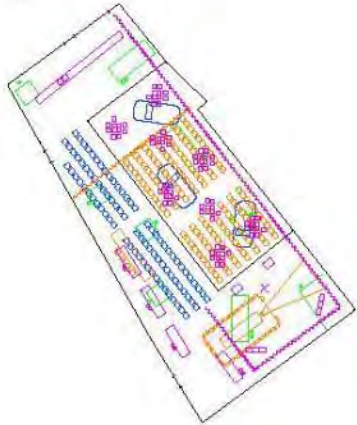
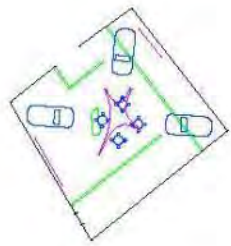
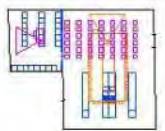
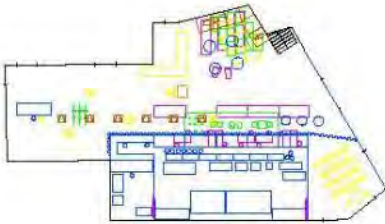
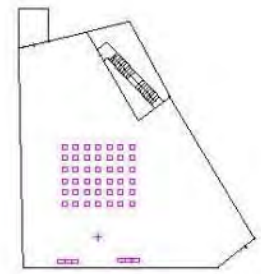
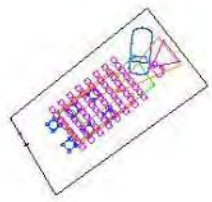
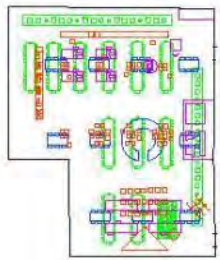
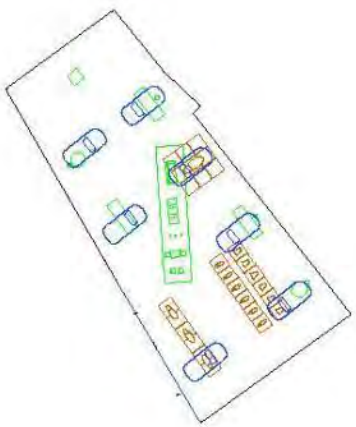




LOKASI EMPULSI ITAS KENTRUL FOKUSIF SAN KOLMAYANTRAC









TID







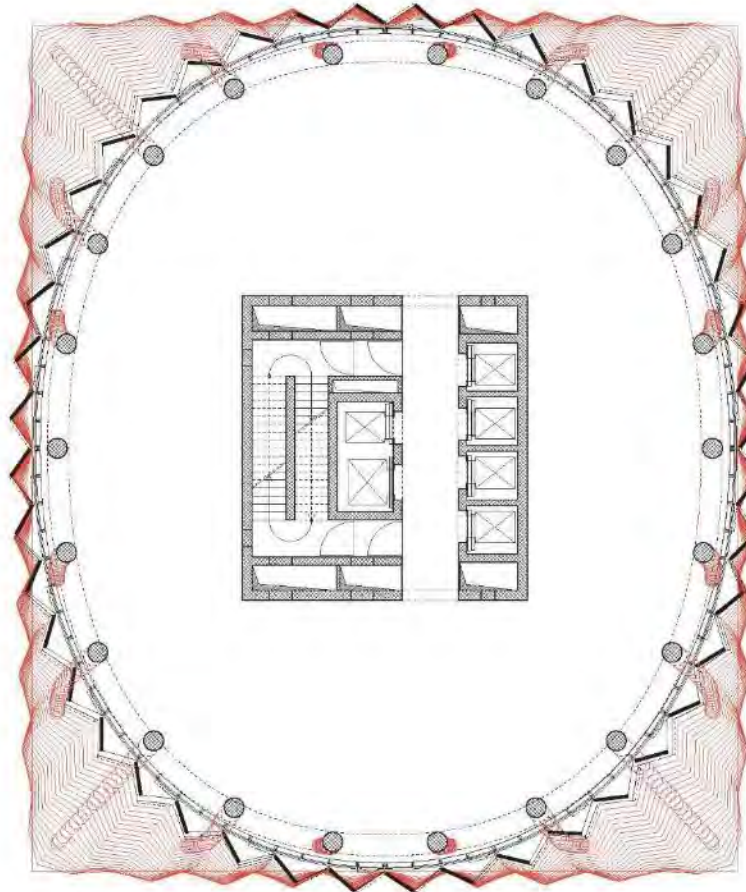


fig. 07

fig. 07
The project evolved from a mesh-like structure into a simpler columnar one, with the core becoming a structural element. From this point on, the final shape of the

tower depended solely on the precise execution of the floor slabs, and this drastically reduced the number of parameters that needed to be juggled during construction.

MULTIPLE BUSSINESS MODELS



(THE ALLIANCE)

Design for (future) alliances?



Skanderbeg Square, municipality of Tirana, AL

Img. 51-52



The Boulevard Garden, whose flooring is realized with a significant economy of means by mixing simple, almost trivial elements—like asphalt and white pebbles—to generate rich textures.

50



Img. 53-54



Img. 55



The Square Garden and its majestic existing trees



The City Gate Garden.

Img. 56



The Opera Stairs Garden: the communist monuments and greenery have become a giant hybrid playground for everyone to enjoy, regardless of their generation or social background.

Img. 57



The Ceremony Garden with Breeze Pavilion, a place to meet up and celebrate.

Img. 58-59



The Botanical Garden, where the variety of tastes and smells of Albanian agriculture is combined with artefacts that relate to the National Museum.

Img. 60



The Museum Stairs Garden.

Skanderbeg Square, municipality of Tirana, AL



Skanderbeg Square, municipality of Tirana, AL



Skanderbeg Square, municipality of Tirana, AL

Design for (future) alliances?



Grootkapel, QUALI, Alseberg, BE

Design for (future) alliances?



Grootkapel, QUALI, Alseberg, BE

Design for (future) alliances?



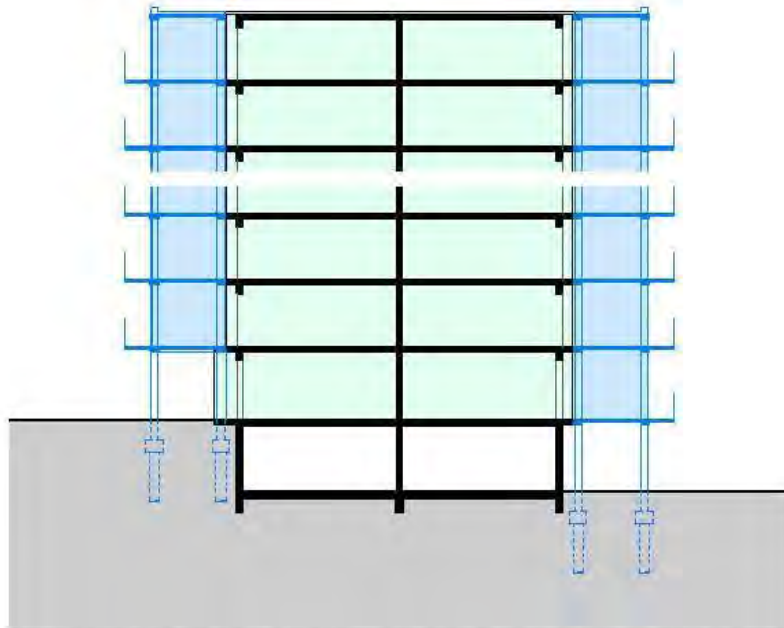
Grootkapel, QUALI, Alseberg, BE

Can C2C create breakthrough in acceleration of urgent renovation?



Peterbos, Anderlecht, BE

Pragmatic choices



2. Uitbreiding, langs de oost- en westgevel wordt een aparte structuur met wintertuinen en balkons toegevoegd.

Peterbos, Anderlecht, BE

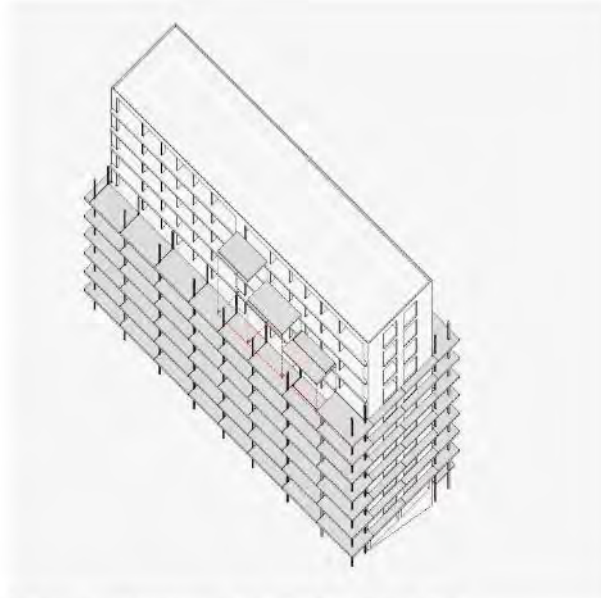


Peterbos, Anderlecht, BE



Peterbos, Anderlecht, BE

Building as a bank of material?



Een systeem van voorgefabriceerde kolommen en platen, onafhankelijk van het bestaande gebouw.



Referentie van een gelijkwaardig systeem qua materiaal en dimensies (Grand Parc - Lacaton & Vassal, Druot, Hutin, Bordeaux)

Peterbos, Anderlecht, BE

NETWORK ORGANISATION

(THE TRANSFORMATION)

URBAN NETWORKS



Central Park District, Tirana



North District, Brussels



Petite Hollande, Nantes



Over de Ring, Stad Antwerpen, BE

NORTH DISTRICT BRUSSELS



A world map with a grid overlay. The map shows the outlines of continents and a grid of latitude and longitude lines. The text "51N4E" is prominently displayed in the center of the map, over the Atlantic Ocean. The map is rendered in black and white.

51N4E